

# Paintings by Christopher Rehm





# The collected works of Christopher Rehm

as of September 2019

An Artist in Klosterlechfeld, Bavaria

You may copy this electronic document and pass on to others as you wish. I encourage you to pass this on to art lovers anywhere. I retain all rights to images paintings and drawings and you may not use any of these without my permission. You may print copies of these for your own personal use and enjoyment if you wish.

All of my works are for sale. If you are interested in one of them please contact me via email at the following address:

[christopherrehm@web.de](mailto:christopherrehm@web.de)

I can promise you I can make you a better price personally than through one of my galleries.

You can follow my works on the following sites:

[www.deviantart.com/christopherrehm](http://www.deviantart.com/christopherrehm)

[www.saatchiart.com/christopherrehm](http://www.saatchiart.com/christopherrehm)

on Instagram at christopher.rehm.14

or on Facebook at

[www.facebook.com/Art-By-Christopher-Rehm-2203243559931028/](https://www.facebook.com/Art-By-Christopher-Rehm-2203243559931028/)

My newest work is always on Instagram or Facebook first.

© 2019 by Christopher Rehm, all rights reserved other than those specifically given above.

## Landscapes



## 21 Nieuwe Kerkhof

By Christopher Rehm

Painted April and May 2019 in Klosterlechfeld Bavaria

28 by 38 cm

Saunders Waterford 200lb HP 100% rag cotton paper, White Knights and Schmincke Horodam watercolor paints

This is my favorite door way in Groningen Netherlands, its in the Boterdiep section of town, near a large Church, I have walked past it for years and thought I should paint it and so I finally did. I love scenes like this, and this is one of my favorites. You can see it too, its on the north side of the church grounds about one block from the main street thru the north east part of the city



## The Castle at the Fork

by Christopher Rehm

2019

21 by 30 cm

100% rag cotton watercolor paper, Schmincke and White Knights

This is a small fantasy I did just for fun. I like doing these they are pretty quick and very entertaining to work on. I don't really have any major story to go with it its just a castle on a warm spring day overlooking the meadows.





## A Sunny Day Outside the Castle

by Christopher Rehm

painted 2018 in Groningen Friesland

18 by 26 cm

Arches 140lb hot press, Schmincke and Old Holland watercolor paints

Another of my fantasy landscapes. This was done in Friesland one evening at the hostel (Simplon Youth Hostel.) its a sunny day in the meadows outside the nearest castle. I dont have a great big background story, mostly I just start drawing and see where things go. Thats what works the best for me.



Along the Canal in Utrecht

by Christopher Rehm

2011

12 \*18 cm

Watercolor paper, Schmincke and Old Holland Paints

Painted from a café in Utrecht one day many years ago. Its rustic that was the mood I was in and the paper lent it self to that treatment. If you go to the right spot you should be able to see what I saw....





The Castle At the River

by Christopher Rehm

2019

21\* 30 cm

Centenaire 100% cotton wc paper, White Knights and Sennelier watercolor paints

Another in a series of fantasy castles and landscapes. This one turned out really well i think. Its one of my favorite paintings. Not sure what inspired it but I like the composition and the colors.





## Heech Canal

By Christopher Rehm

May 2019

29 \* 38 cm

Sanders Waterford 100% cotton 200lb hp paper White Knights and Sennelier Watercolor paints

The inspiration came from a vacation to Heech in 2015 I took a lot of photos there, its a tourist town in the polder out in Friesland. At some point I have ideas for probably 100 more scenes from that trip but this one is one that really struck me. It was a beautiful day that day, yes it was.



## My Side of the Mountain

By Christopher Rehm

Nov 2018

31 \* 24 cm

100% rag cotton wc paper, Sennelier and Schmicke Horodam watercolor Paints

This was actually inspired by a book I read as child by the same name. About a young teenager that spends a year living (successfully) in the wilderness. Its definitely not the same mountain, but its mine. Another early one that means a lot to me.





November 6th South of Zuiderwolde

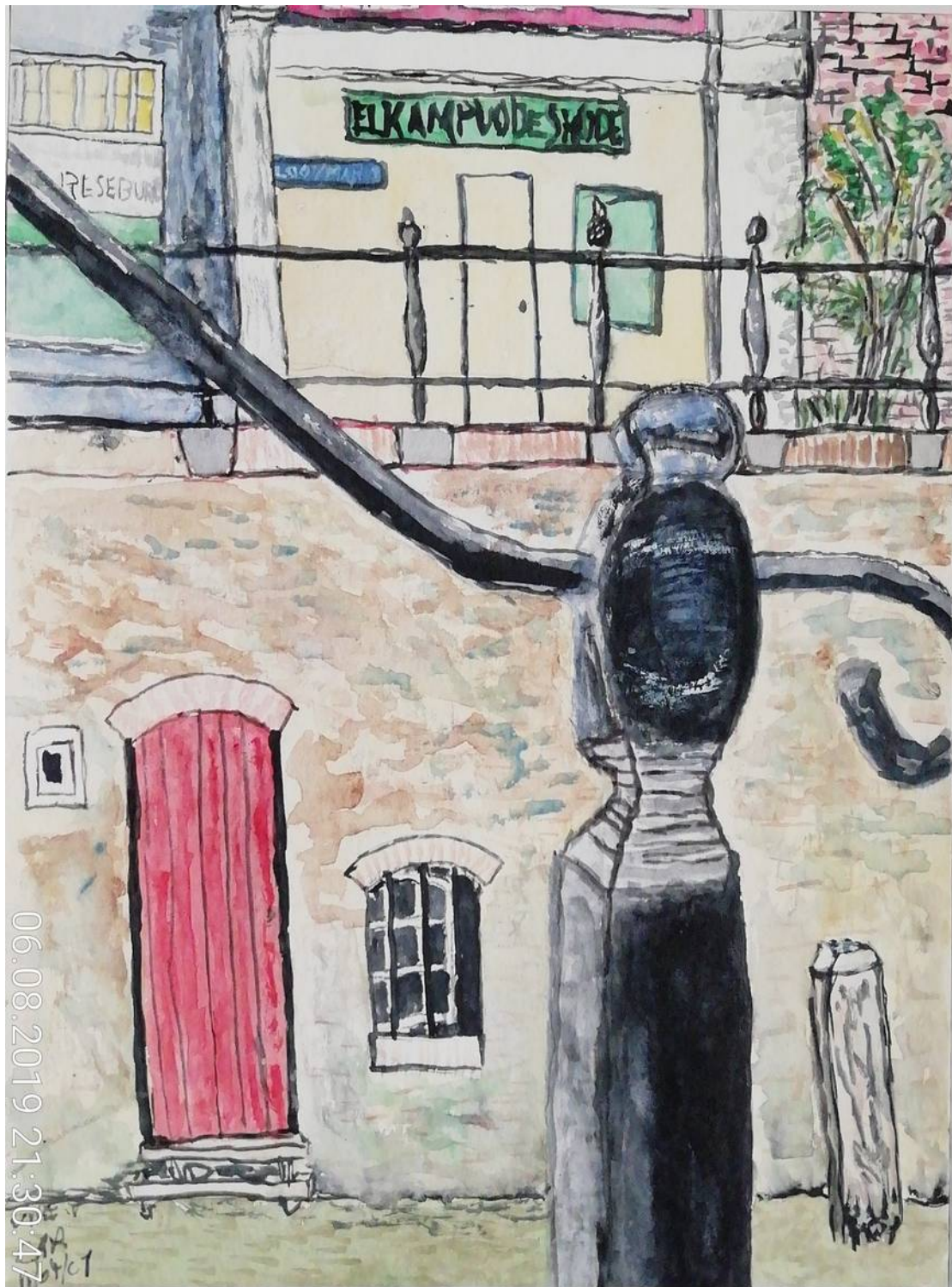
by Christopher Rehm

2019

41 \* 54 cm

Sanders Waterford 200lb hp 100% rag cotton paper White Knights and Sennelier watercolor paints

Ah this was a lovely day. I took a LONG hike north of Groningen doing photos for studio work later, and ended up laying here on the bank of the creek for an hour and just relaxing. I love this view, its one of my best memories of Frylsand. I'm also really happy with the overall effect here, its what I was looking for. Enjoy!



On The Canal, Utrecht

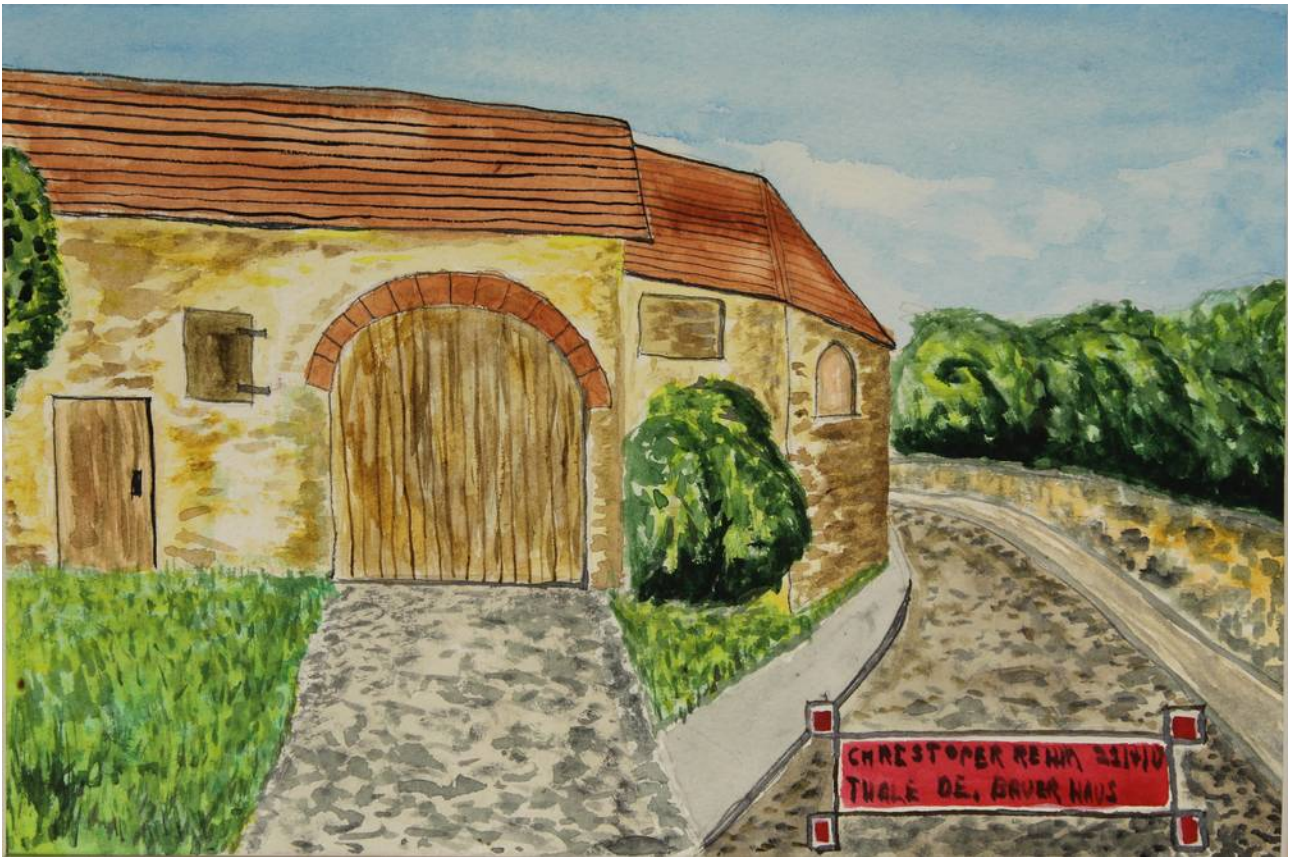
by Christopher Rehm  
2011

18 \* 25 cm

watercolor paper with Schmincke watercolor paints

This is one of my early paintings in Europe and one of my favorites. I started it on location at Cafe Anderson, in the basement, looking out the window and finished it in the studio at home. If you go there you can probably find the seat I was sitting in when I did the painting. I think it captures that scene in Utrecht very well.





## On the Road to Thale

by Christopher Rehm

May 2019

17 \* 26 cm

100% rag cotton watercolor paper with White Knights and Schmicke Horodam watercolor paints

This is also from that hiking trip in the Harz years ago, I really liked this barn, its a great image. Hopefully I'll be able to do some of the other things I have from this trip at some point



## On The Road

by Christopher Rehm

May 2019

12 \* 18 cm

100% rag cotton watercolor paper , White Knights and Schmicke Horodam wc paints

This was from a photo I did while hiking in the Harz Mountains many years ago. It was an awesome hike and I'd like to do it again someday when I have the chance. The views were amazing.





## The Dutch Coast

by Christopher Rehm

2012

17 \* 25 cm

watercolor paper with Schmincke watercolor paints

Something I did after I returned from a vacation in Holland. Its the coast north of Schevenegen somewhere. Or was inspired by it.



## Summer on the Canal

by Christopher Rehm

2018

17 \* 25 cm

100% rag cotton watercolor paper with White Knights and Schmincke Horodam watercolors

Another inspiration from the November 2018 painting trip to Groningen. Again I started this as the Hostel I stayed at and finished it back home in the studio. I like to work like that, I have more time to think things over that way.





The Beach at Schevenegen

by Christopher Rehm

2011

17 \* 25 cm

watercolor paper, Schmincke watercolor paints

A view of the dunes and the beach at Schevenegen Holland, from a vacation years ago.



## The Bridge

by Christopher Rehm

2012

12 \* 18 cm

100% rag cotton watercolor paper with Schmincke Horodam watercolor paints

This was an early work, its from a real place in the Netherlands but I cannot remember where. Its small but bright.





## The Canal

by Christopher Rehm

November 2018

15 \* 30 cm

Arches 140 Lbs HP 100% rag cotton paper, White Knights watercolor paint

This was something I did on the Nov 18 painting trip to the Netherlands, in Groningen, at the Hostel. Just a little imaginary scene. I wanted to test out the new paints and paper, really turned out well.



The North Bank in Utrecht

by Christopher Rehm

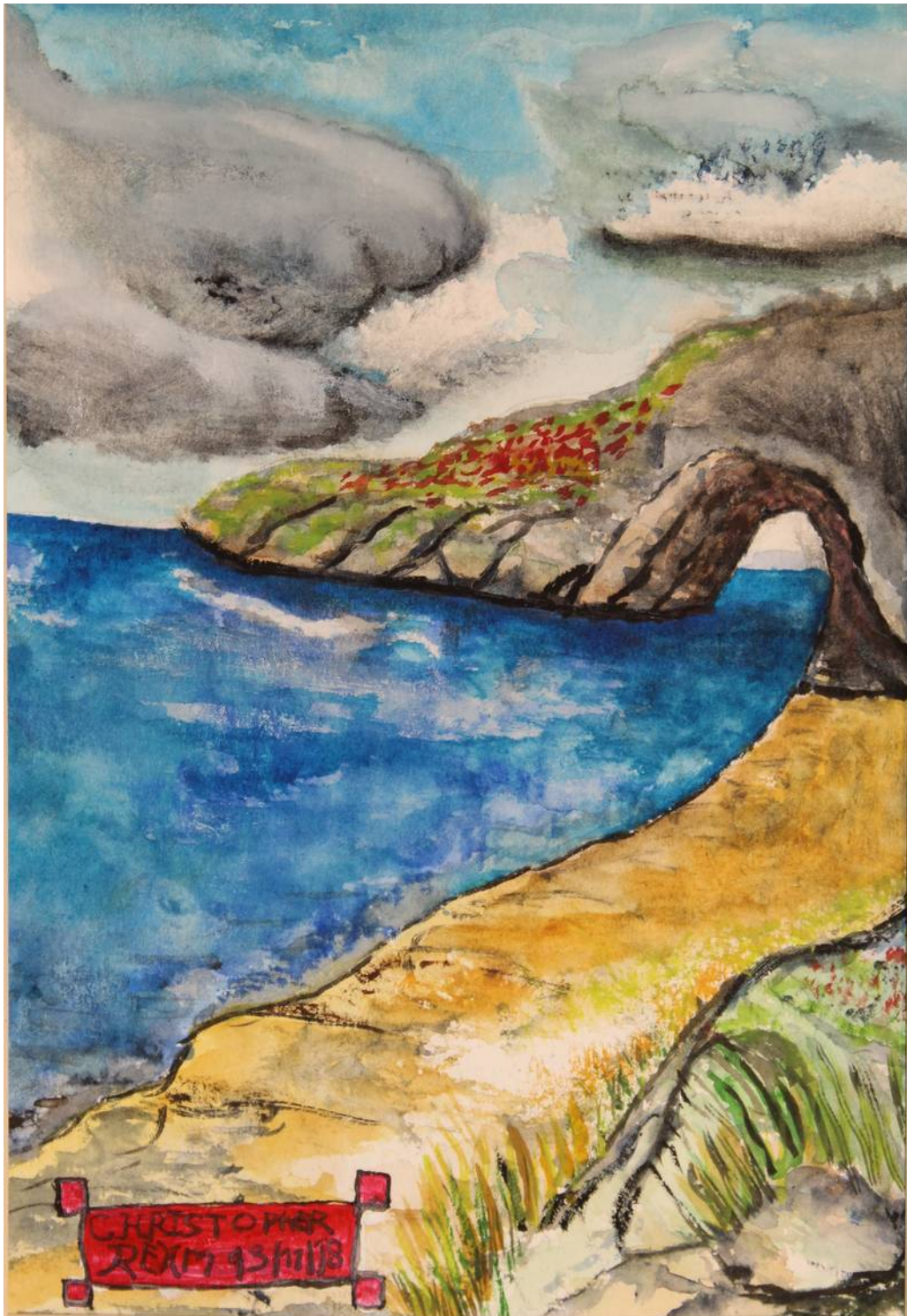
2012

17 \* 26 cm

watercolor paper with Schmincke watercolor paints

This is another early work, again from Utrecht. I like the rustiness of it and the colors. It bright, the blue canal is really really bright!





The North Coast of Corsica

by Christopher Rehm

2010

17 \* 25 cm

watercolor paper and Schmincke watercolor paints

The idea came from a vacation to Corsica in 2007. There was a lot paintable there, but I was still only painting part time at that point. I like this small seascape.



Waiting at Windschotten

by Christopher Rehm

2012

17 \* 25 cm

watercolor paper with Schmincke Horodam watercolor paints

This was started while waiting an hour for a train in Windschotten. I finished it back in the studio. I love these little scenes in the Netherlands they are everywhere.





## Zuiderwolde Number 2

by Christopher Rehm

May 2019

13 \* 37 cm

100% rag cotton watercolor paper with White Knights and Schmicke Horodam watercolor paints

Another view of Zuiderwolde, a bit farther away than the first one. I really like doing small landscapes like this.



## Two Churches in Fryslân

by Christopher Rehm

June 2019

40 \* 53 cm

Sanders Waterford 200lb HP 100% rag cotton watercolor paper with White Knights and Schmicke watercolor paints

This is from the Nov 2018 trip to Fryslân and Groningen, it was a stunningly beautiful November, with really good weather. This is another scene that I really enjoy.



# Fachwerkhäuser



Fachwerkhaus #1

by Christopher Rehm

May 2019

21 \* 31 cm

100% rag cotton watercolor paper, White Knights and Schmincke Horodam watercolor paints

This is the first in this series of fantasy half timber (In German, Fachwerk) houses. The idea has been floating around in my mind for a while, and I thought this would make a good series to paint, and to promote my other works, ideas etc. As the first one its a bit less developed than the rest , but then its always like that when you start a new series of paintings.





Fachwerkhaus #2

by Christopher Rehm

May 2019

21 \* 31 cm

100% rag cotton watercolor paper, White Knights and Schmincke watercolor paints.

The second in this series, this one got great shutters and details, as well as a more unfinished surface look.



Fachwerkhaus #3

by Christopher Rehm

June 2019

21 \* 31 cm

100% rag cotton watercolour paper, White Knights and Schmicke Horodam watercolor Paints

The Third in this series of paintings, this one is becoming more developed. I like the doors and the little spaces under the first floor.





Fachwerkhaus #4

by Christopher Rehm

July 2019

20 by 31 cm

100 % rag cotton watercolor paper, White Knights and Schmincke Horodam watercolor paints

The fourth in this Series, something tall and thin.



Fachwerkhaus #5

by Christopher Rehm

August 2019

21 \* 31 cm

100% rag cotton watercolor paper, White Knights and Schmincke Horodam wc paints

Number 5 in the series. There are some lights on here, I wonder who is home? Looks like a friendly house, maybe we should knock on the door....





## Fachwerkhaus #6

by Christopher Rehm

August 2019

21 \*31 cm

100 % rag cotton watercolor paper, White Knights and Schmincke Horodam watercolor paints

This is number 6 in the series, look there is a dog house out side. And even a little dog taking a nap! Since there are no lights he is probably waiting for his family to come home.



Fachwerkhaus #7

by Christopher Rehm

July 2019

22\*30 cm

100% rag cotton watercolor paper with White Knights and Schmincke Horodam watercolor paints

Number 7 in the series, This one is something of a small chalet. It looks like someone is home upstairs.





Fachwerkhaus #8

by Christopher Rehm

July 2019

22 \*30 cm

100% rag cotton watercolor paper with White Knights and Schmincke Horodam wc paints

This is number 8 in the series, a real mansion with a nice shade tree outside. I don't think anyone is at home though the lights are all out.



Fachwerkhaus #9

by Christopher Rehm

August 2019

22 \* 31 cm

100% rag cotton watercolor paper with White Knights and Schmincke watercolor paints

This is number 9 in the series. A nice big house with turrets and a double door. I think someone is coming down the stairs to answer it.





Fachwerkhaus #10

By Christopher Rehm

July 2019

26.5 \* 27 cm

100% rag cotton watercolor paper with White Knights and Schmincke Horodam watercolors.

This is number 10 in the series, its a non standard picture format, which I rather like. There are definitely people home and the door is... unique.



Fachwerkhaus #11

by Christopher Rehm

21 \*31

August 2019

100% rag cotton watercolor paper with White Knights and Schmincke watercolor paints

This is number 11 in the series. Its a big house with a lot going on, several balconies, and some of the fill work is exposed to see.





Fachwerkhaus #12

by Christopher Rehm

21 \* 31 cm

August 2019

100% rag cotton watercolor paper, with White Knights and Schmincke Horodam wc paints

Number 12 in the series, this one is really a big place. Almost a sort of castle. There are people home thats for sure.... They must have a really big family.

## Drawings





## A Street in Wernigerode

by Christopher Rehm

August 2019

A4 paper pencils

One of the many streets in this beautiful little city. Well worth a visit if you are in the area. there is a lovely narrow gauge railroad here that you simply must ride to the top of the mountain if you have time. bring your walking shoes



An alleyway in Groningen

by Christopher Rehm  
drawn august 2019  
A4 paper, pencil

A side alley in Groningen Netherlands, where the Shipping Museum is. I have always liked this space, and finally drew it. Its from a photo I took years ago, if you want to find it its on the north west side of the city on the island. The museum is really excellent. Hope you enjoy for visit. pencil and drawing paper.





Fireball

Drawing by Christopher Rehm

Dec 2018

pencil and paper A4

Just an inspiration one evening while I was watching space night on german TV. Again not a big story, but there is a ship avoiding something coming in fast. Look carefully.

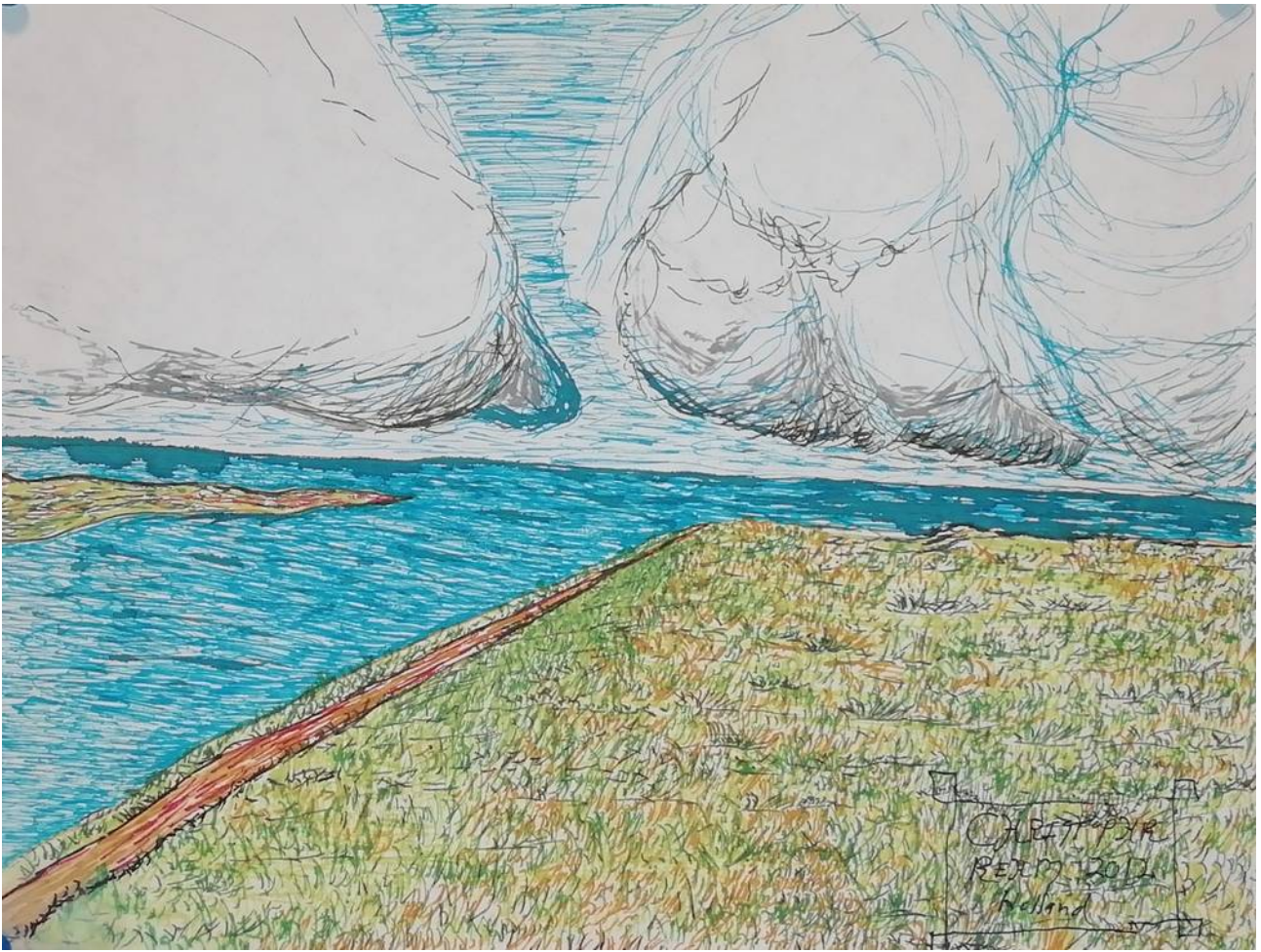


Heimkerk Castel, Heimkerk Netherlands

by Christopher Rehm  
August 2019  
A4 paper and pencil

I went here on vacation in 2016, and stayed at the top of the Keep in the drawing for a week. I was a great vacation, did lots of sketching, photo taking, exploring, and the like, This is a stay-OK hostel today and I can highly recommend staying here if you get a chance. You'll have a very relaxing time. Amsterdam is 25 minutes away by train and here you are in the country. Recommended.





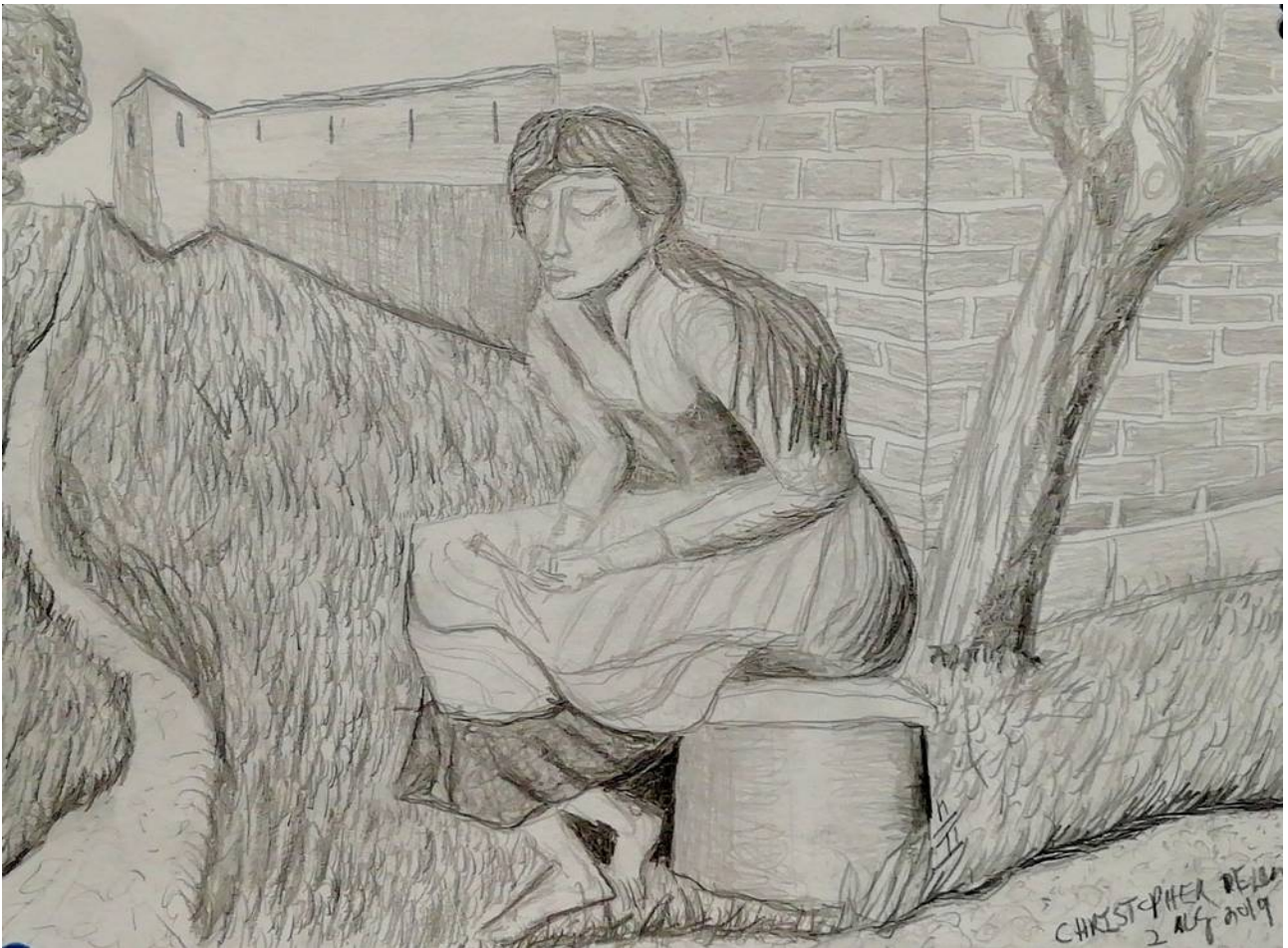
## On The Coast

by Christopher Rehm

2010

A4 paper and pen and inks

This is something I drew between classes that year. At the time I carried around a pen and ink set and did a lot of drawing in my down time, this was based on some of my early visits to the Netherlands, and is really just something rather impressionistic.



After a painting by Stan Hope

A drawing by Christopher Rehm

July 2019

A4 paper and pencils

A drawing after a painting that I like by Stan Hope, this is my interpretation of the scene. I like how this one turned out. Its sort of surreal and real at the same time.





## Sarrel's Castle

by Christopher Rehm

2012

A4 paper, pens and inks

This started as a drawing between classes and grew from there. Its REALLY bright and colorful, and one of my favorite works. I have ideas to do more like this, it just takes a lot of time to do them. There is no story yet behind Sarrel and his Castle, but maybe you can write one... How about it?





The Door to Kyfhauser Gate

By Christopher Rehm

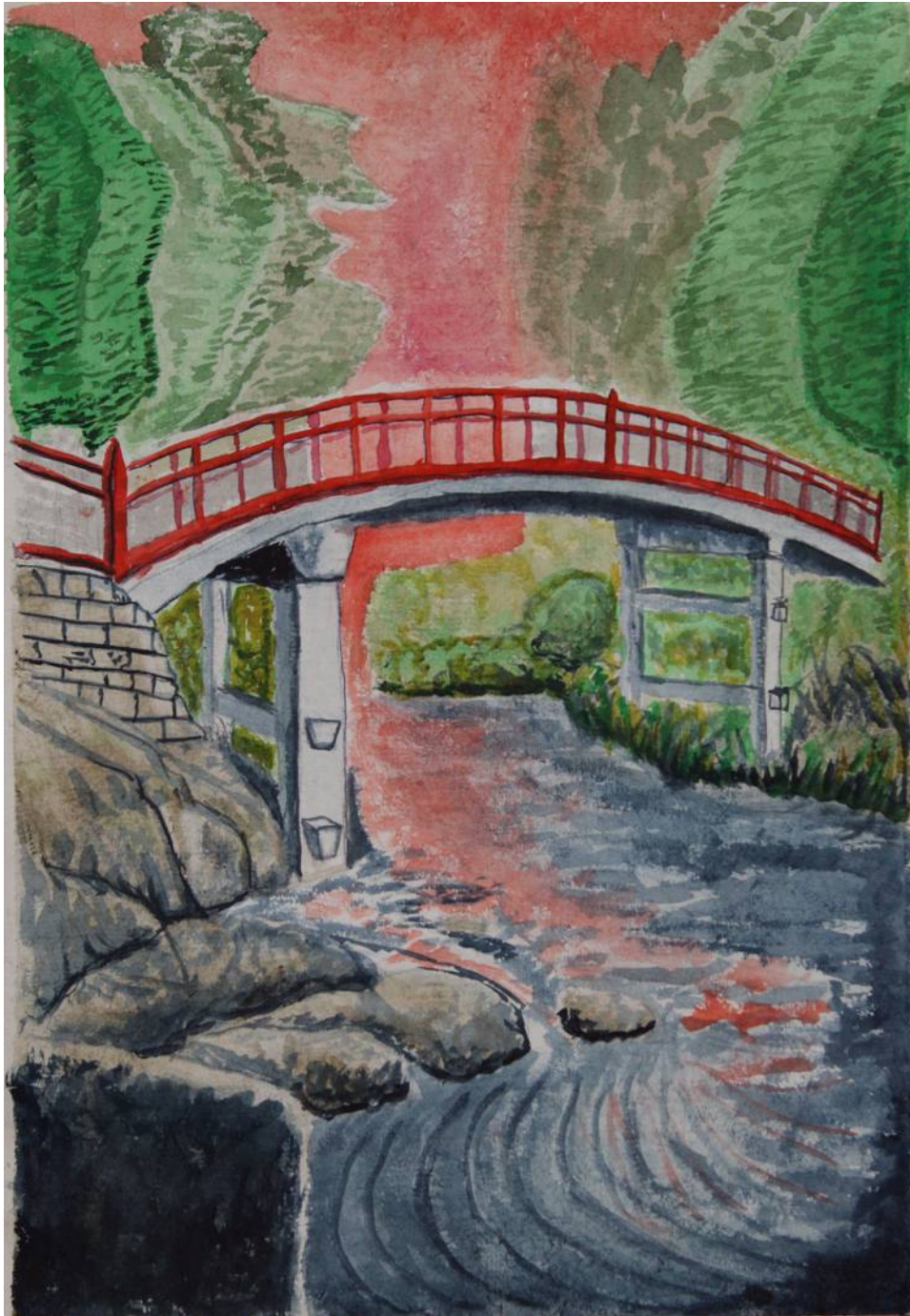
2012

A4 paper and pen and ink

This is for a sci-fi novel I started writing but haven't finished yet. About the return of Frederik Barbarossa to save modern Germany from ecological catastrophe. According to legend Barbarossa sleeps in Kyfhauser waiting till all the ravens die in Germany when he will come back to save it. This is the door to the place where he sleeps.



## **Reproductions**



The Red Bridge

after a painting by Kawase Hasui

by Christopher Rehm

2019

38 \*54 cm

100% rag cotton Ghandi watercolor paper with White Knights and Schmincke watercolor paints

This is a copy of a print by Kawase Hasui, one of my favorite artists. I really like the original and I like how the copy turned out. Personally I find copies can teach you a lot about how other artists do things and traditionally all artists learned at least partly by copying others.



## **The Springe 918 Series**



The Farmers Daughter, Springe 918 Series Painting #1

by Christopher Rehm

July 2019

18 \* 26 cm

100% cotton rag watercolor paper, White Knights and Schmincke watercolor paints

This is the first of a series of paintings about life in Springe, my former hometown 1000 years ago this is a typical farm scene. Pretty self explanatory. There is a master painting I have drawn up that will be in oils, from the summer solstice.



## Flowers



Flower #0

by Christopher Rehm

15 \* 30 cm

March 2019

Painted at the Augsburg Hof Gasthaus, Landsberg am Lech Bavaria.

The idea for a series of semi abstract florals / botanicals. Some slight problems in this one. But useful as a reference.





Flower #1

by Christopher Rehm

May 2019

13 \* 32 cm

100% cotton rag watercolor paper, White Knights and Schmicke Horodam paints

The first in a series of semi abstract botanical paintings. Inspired by Charlie Macintosh, the art nouveau period and medieval manuscripts.

## **Sea Beastie Series**





The Sea Beastie from Titan

by Christopher Rehm

Nov 5-6 2018, Simplon Youth Hostel, Groningen Netherlands

15 \* 30 cm

Arches 140lb HP 100% cotton watercolor paper with Sennelier and White Knights watercolor paints

This was the first real Sea Beastie Painting, the initial concept of the world of Sea Beasties. I did this at the Simplon Youth hostel in Groningen, Netherlands on a painting and rest vacation. This is one of my favorites in this collection of works.



## The Sea Beastie Family

by Christopher Rehm

Dec 2018

15 \* 30 cm

Sanders Waterford 200lb HP rag cotton watercolor paper, Sennelier Paints

This is from the Sea Beasties series, its just a typical family group of Sea Beasties. I like this one its not too busy and has really nice colors in it.





A Sea Beastie from Titan

by Christopher Rehm

November 2018

15 by 30 cm

Sanders Waterford 200 lb HP watercolor paper, Sennelier watercolor paints

An early Sea Beastie painting, another one where I really like the colors and the simplicity of the layout.



## A Sea Beastie Scooter

by Christopher Rehm

Dec 2018 Jan 2019

17 \* 25 cm

100% rag cotton watercolor paper with White Knights and Schmincke Horodam watercolor paints

This is an earlier work in the Sea Beastie series, the first one with a scooter. Its operating on a track but they can go trackless as well. You can see how Sea Beasties use theses Scooters in some of the other paintings.





## A Sea Beastie Sunday

by Christopher Rehm

Dec 2018

41 \* 54 cm

100% rag cotton watercolor paper with White Knights and Schmincke watercolor paints

A typical Sea Beastie Sunday, with Sea Beasties out and about having fun. You can see some apartment buildings in the walls of the canyon and some crystal power stations in the distance.



## On The Middle Plain

by Christopher Rehm

May 2019

13 \* 37 cm

100% rag cotton watercolor paper with White Knights and Schmincke Horodam watercolor paints

Somewhere on Titan, this scene is a typical Sea Beastie Scene. You can see big crystal power stations in the distance. And a typical Titan box Canyon.





A Sea Beastie Baby

by Christopher Rehm

Dec 2018

12 \* 18 cm

100% rag cotton watercolor paper with White Knights watercolor paints

A simple picture of one Sea Beastie baby. Some nice terrain in the background.



## A Sea Beastie City

by Christopher Rehm

2018

26 \* 36 cm

100% rag cotton watercolor paper with White Knights and Sennelier watercolor paints

This is what a Sea Beastie city looks like, lots of apartment blocks, flags, and some pathways or streets. Its underwater so its a bit different than our cities. And its colorful... Sea Beasties like color.





## Sea Beastie Scooter Racing

by Christopher Rehm

2019

17 \* 26 com

100% rag cotton watercolor paper with White Knights and Schmincke Horodam watercolor paints

Two Sea Beasties scooter racing on the track! They are neck and neck right now, hard to say how this race will turn out. I think the one on the right is slightly ahead...



## The Sea Beastie Skate Park

by Christopher Rehm

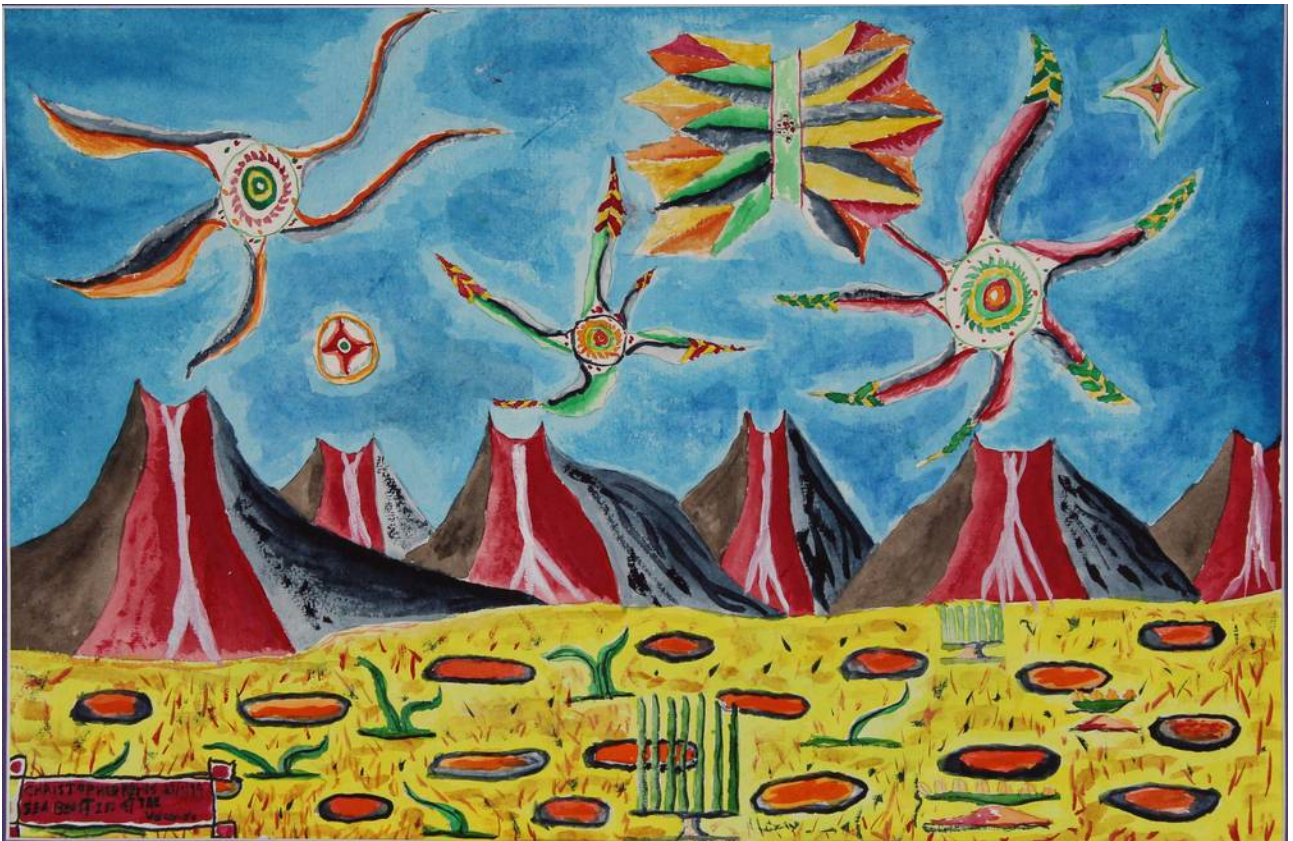
2019

13 \* 39 cm

100% rag cotton watercolor paper with Schmincke Horodam and White Knights watercolor paints

Some Sea Beastie skaters hanging out at the skate park one afternoon. Its thought they use the white ground worms as skateboards.





## Sea Beasties at the Volcanoes

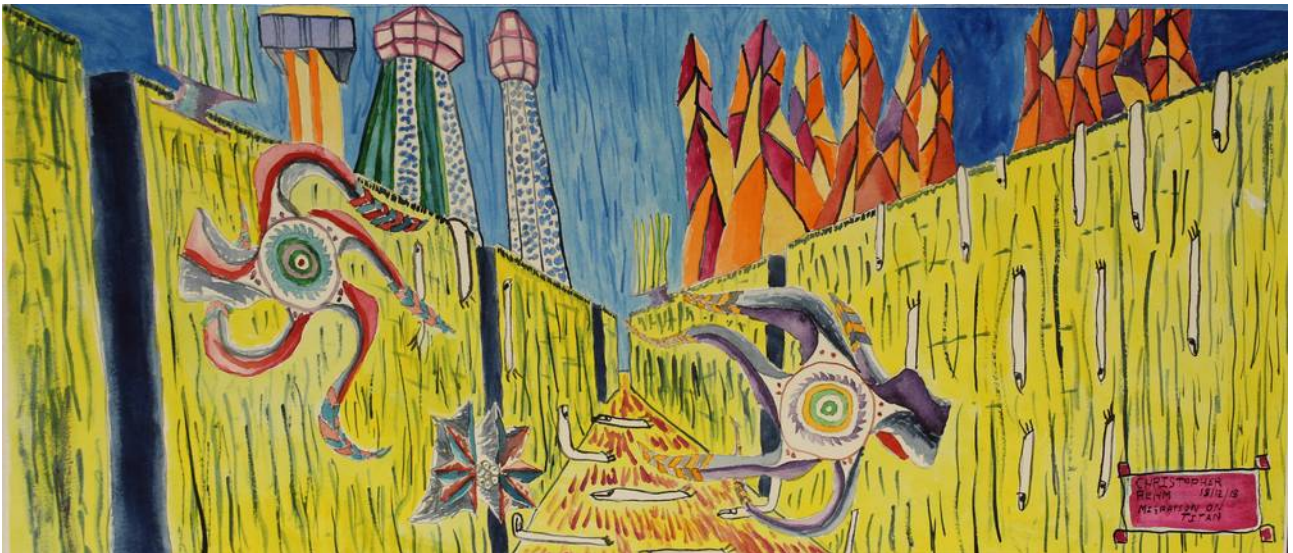
by Christopher Rehm

2018

38 \* 54 cm

Ghandi cold pressed 100% rag cotton paper with Sennelier watercolor paints

There are volcanoes on titan, and here we see a number of beasties around the general area of them. The orange rocks up front are local to the area around the volcanoes, you cannot find them anywhere else.



## Sea Beasties in the Trench

by Christopher Rehm

2018

25 \* 54 cm

100% rag cotton watercolor paper with Sennelier and White Knights watercolor paints

These Trenches are a natural geologic feature on the surface of Titan, they run all over the moon. Sea Beasties use them as highways around the place. And live on the top or in hollows in the sides of them.





## Sea Beasies on the Move

by Christopher Rehm

2018

38 \* 54 cm

Sanders Waterford 200lb HP 100% rag cotton watercolor paper with Sennelier watercolor paints

This is was first large sea beasies painting I did and its still one of my favorites. You can see the typical terrain of the planet, some Sea Beasies about, as well as some of the other flora and fauna. Also you get a feel for the mountains on the planet here..



## Sea Beastie Pinball

by Christopher Rehm

2018

54 \* 38 cm

Sanders Waterford 200lb HP 100% rag cotton watercolor paper with Sennelier, White Knights and Schmincke Horodam watercolor paints.

The 3rd big Sea beasties painting. This one shows them playing Sea Beastie pinball, one of their favorite pastimes. Its a very bright, colorful painting.





## Teenage Sea Beasties

by Christopher Rehm

2018

12 \* 17cm

100 % rag cotton watercolor paper with Sennelier and White Knights watercolor paints

Just two Teenage Sea Beasties hanging out together. Its likely that they are on a date.



The Fligey Thingy from Titan.

By Christopher Rehm

2018

17 \* 26 cm

100% rag cotton watercolor paper with Sennelier and White Knights watercolor paints

There are flying creatures that fly much like birds in the seas of Titan, here we see one of them, following a group of white worms across the plains. There are some crystal growths in the distance, and some Titan star fish also.





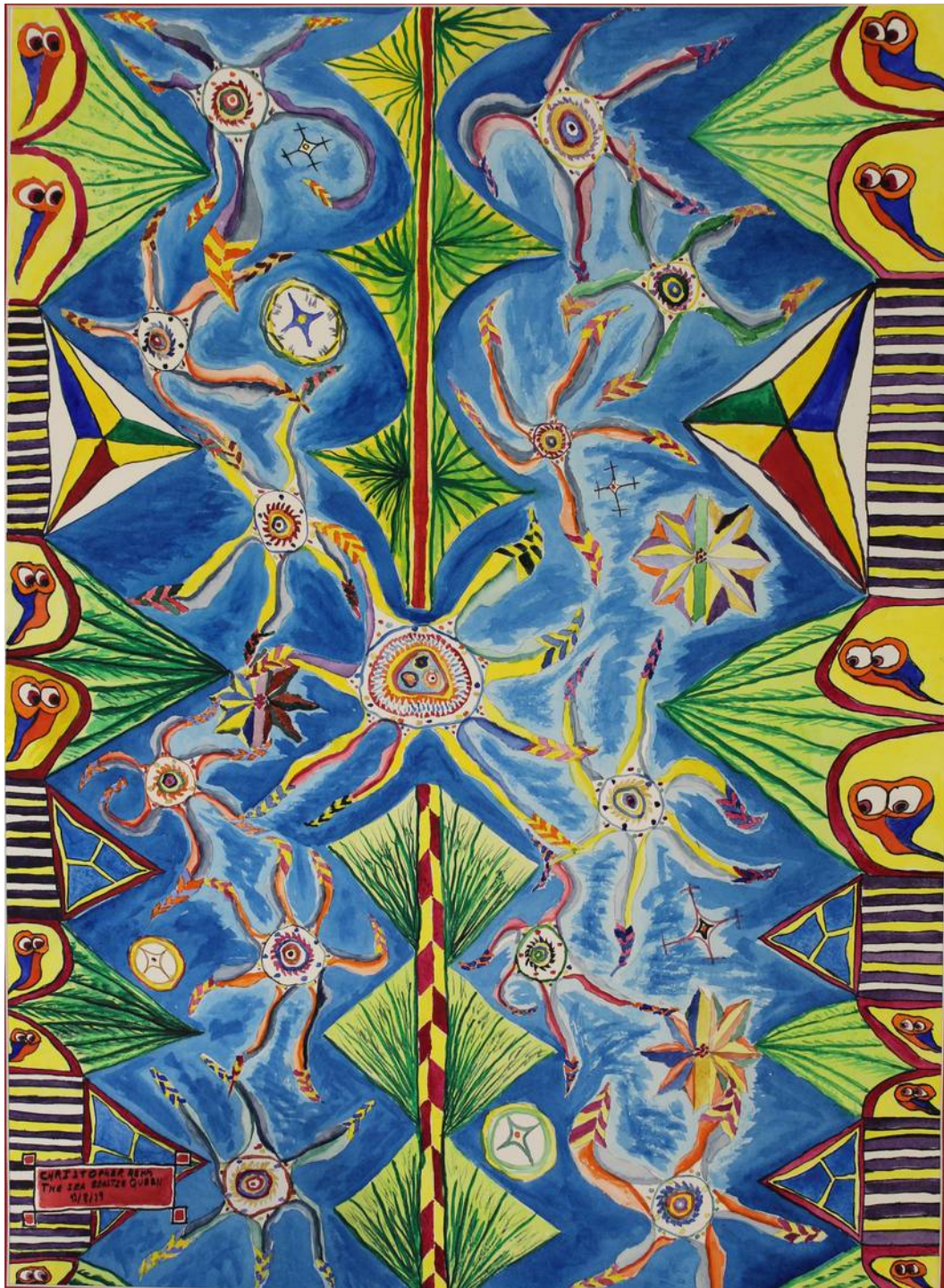
## The Sea Beastie Sock Hop

by Christopher Rehm  
2018

15 \* 30 cm

140 lb Arches HP 100% rag cotton paper with Sennelier Watercolor paints

Its a Sea Beastie Dance! Sea Beasties love to have fun, and here we see them having a Sea Beastie sock hop, it looks pretty rockin if you ask me...



The Sea Beastie Queen and her subjects in a game of Super Sea Beastie Pinball

by Christopher Rehm

Dec 2018 to August 2019

54 \* 76 cm

300lb Arches HP 100% rag cotton watercolor paper with Sennelier, White Knights and Schmincke Horodam watercolor paper

This is the masterwork in this series, its a full sheet of Arches 300 lb HP watercolor paper. This is the queen of the Sea Beasties playing Pinball with her courtiers, which is a favorite pastime of Sea Beasties. Great colors, lots of detail, one of my favorite paintings of all time.



## In Collections



### The Boat in Utrecht

by Christopher Rehm

2012

21 \* 31 cm

Watercolor paper with Schmincke Horodam watercolor paints

Another of the early works here in Europe. This is the coffeeshop on a boat in Utrecht. I used to sit and paint in there got a lot of paintings started in that place. It is now owned by a collector in Springe Germany.





## A Street in Utrecht

by Christopher Rehm

2018

21 \* 31 cm

watercolor paper with Schmincke Horodam watercolor paints  
in a private collection.

This was something I started years ago at the location and only finished in 2018. It was one of my motivations to paint more. I really enjoyed painting this and I know the collector enjoys it as well.



## The Sea Beasties Ball

by Christopher Rehm

2019

27 \* 54 cm

100% rag cotton watercolor paper with White Knights and Schmincke Horodam watercolor paints

A larger Sea Beastie scene, they are having a ball on the open plains I think. Or maybe its just rush hour. Not 100% sure, little is known about Sea Beasties. This is a nice large colorful painting and is in the hands of a collector in Hannover Germany.